

1 Servo Cable Exchange Manual

1x and/or 1x

! **1** Switch to dynamic mode (valve 50% open)

Double press quickly to enter dynamic mode*

*see software manual for more information about switching to 50% mode when a blackbox, control unit or smartbox 1 is installed

2 Disconnect smartbox 1/2, blackbox or control unit from power supply

2 Remove original cables (exhaust side)

Optional

2x 5

2x 3

2x 4

3 Remove original cables (servo side)

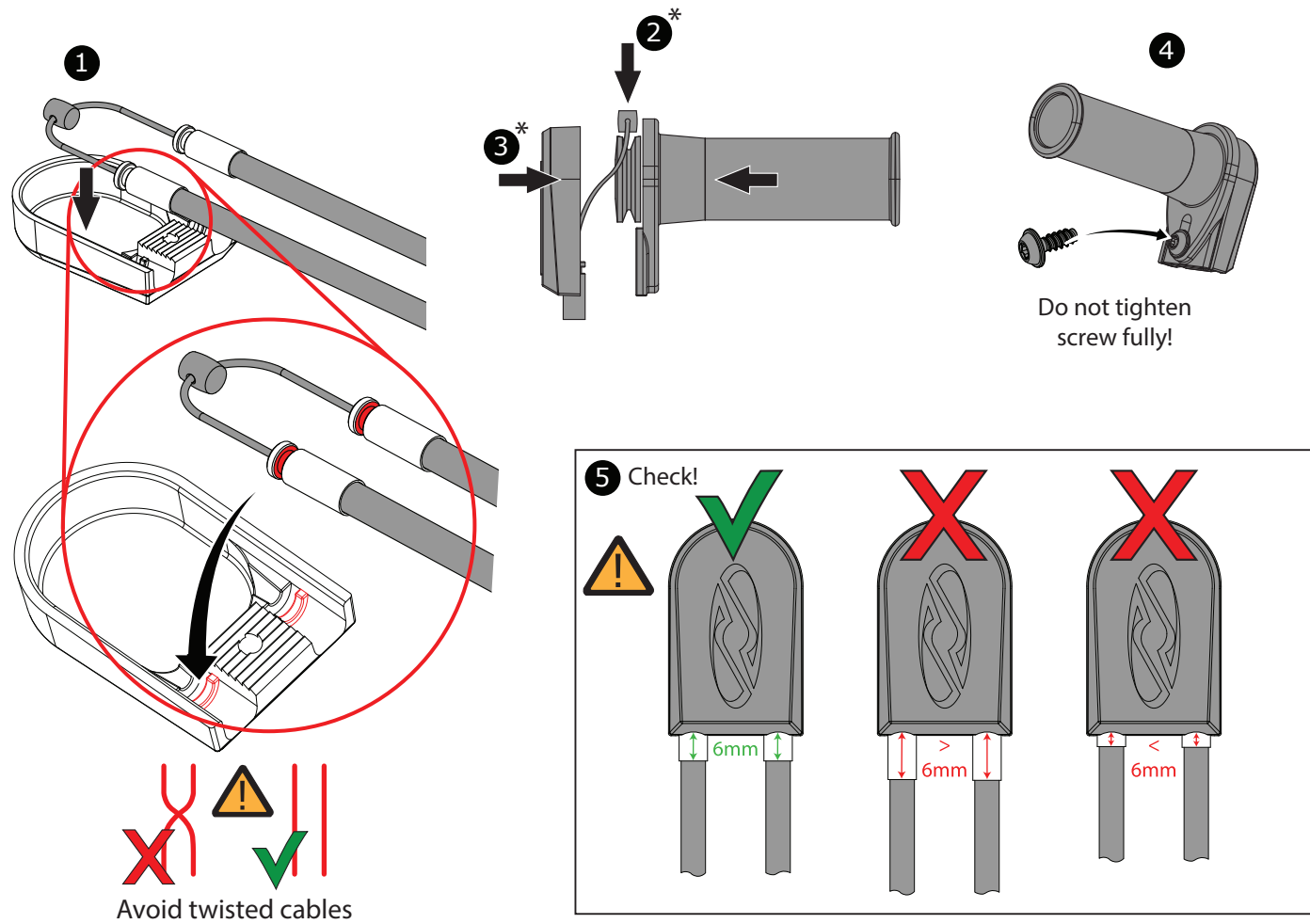
Do not re-use!

4 Slide sleeve over cables, mount new cables to exhaust

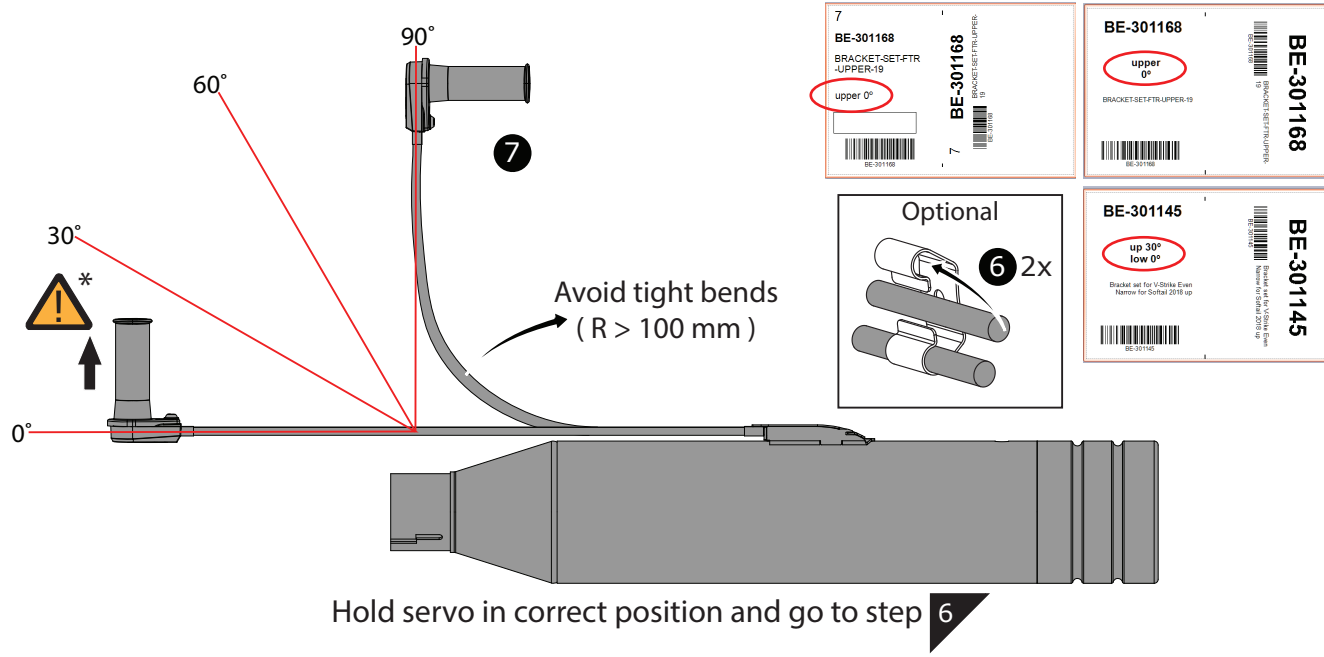
2x 2

2x 3

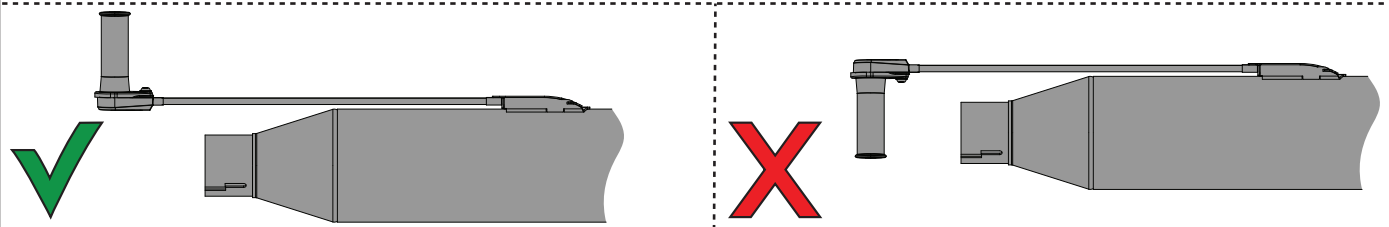
5 Mount new cables to servo's and adjust cable tension



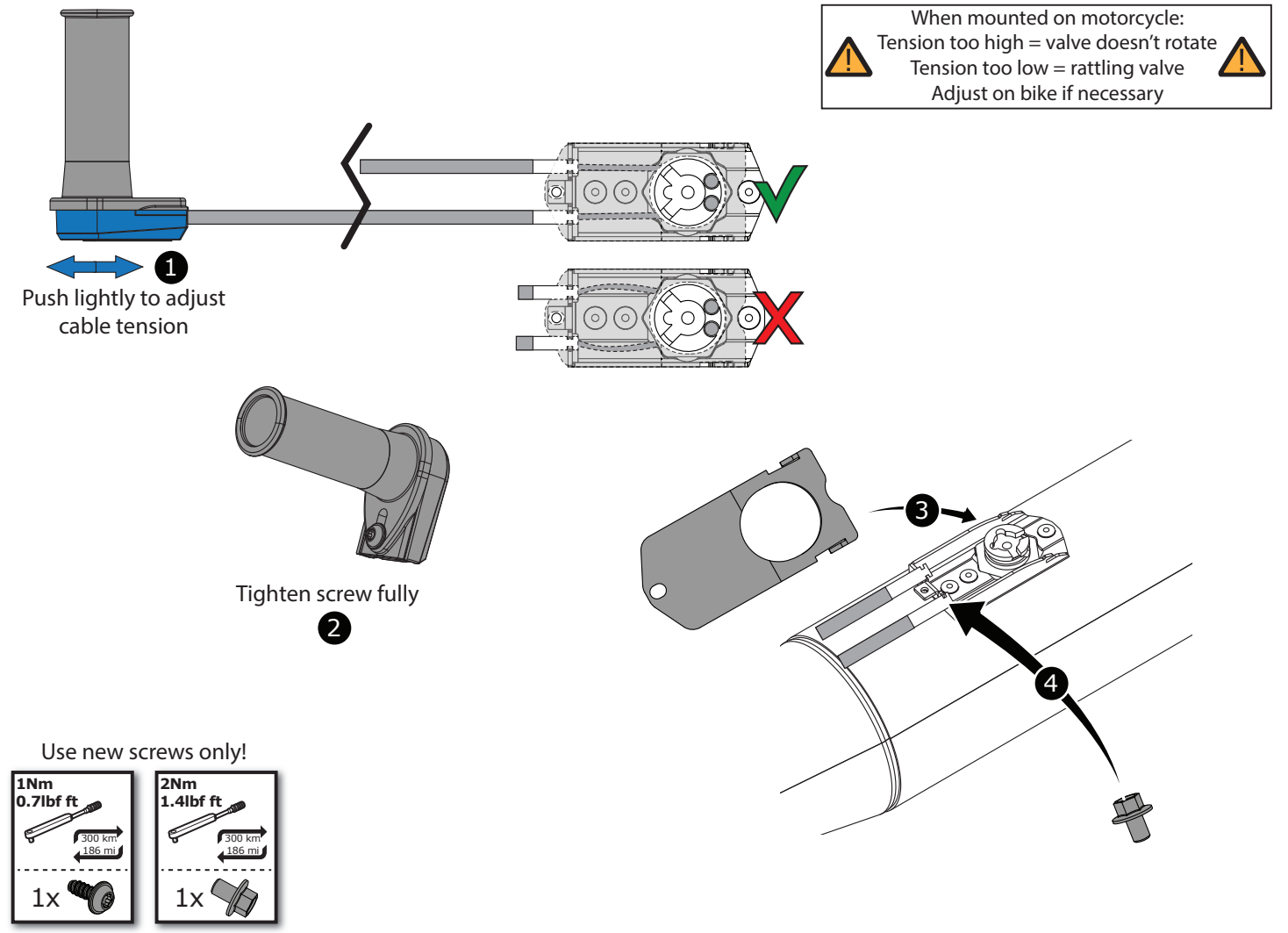
Bend servo according to angle on label



*Check servo mounting direction



6 Adjust cable tension and tighten screws



7 Checklist/Troubleshooter

- Check:
- If applicable: Cable's of both exhausts have been exchanged?
 - Sleeve installed?
 - Servo angle according to label?
 - Cable tension ok?
 - Screws tightened?
- Troubleshooter:
- If applicable: 1 exhaust opens and 1 closes -> twisted cables
 - If applicable: 1 exhaust opens and 1 closes -> 1 servo mounted in wrong direction
 - Valve doesn't rotate -> Cable tension too high
 - Valve makes a rattling noise -> Cable tension too low