

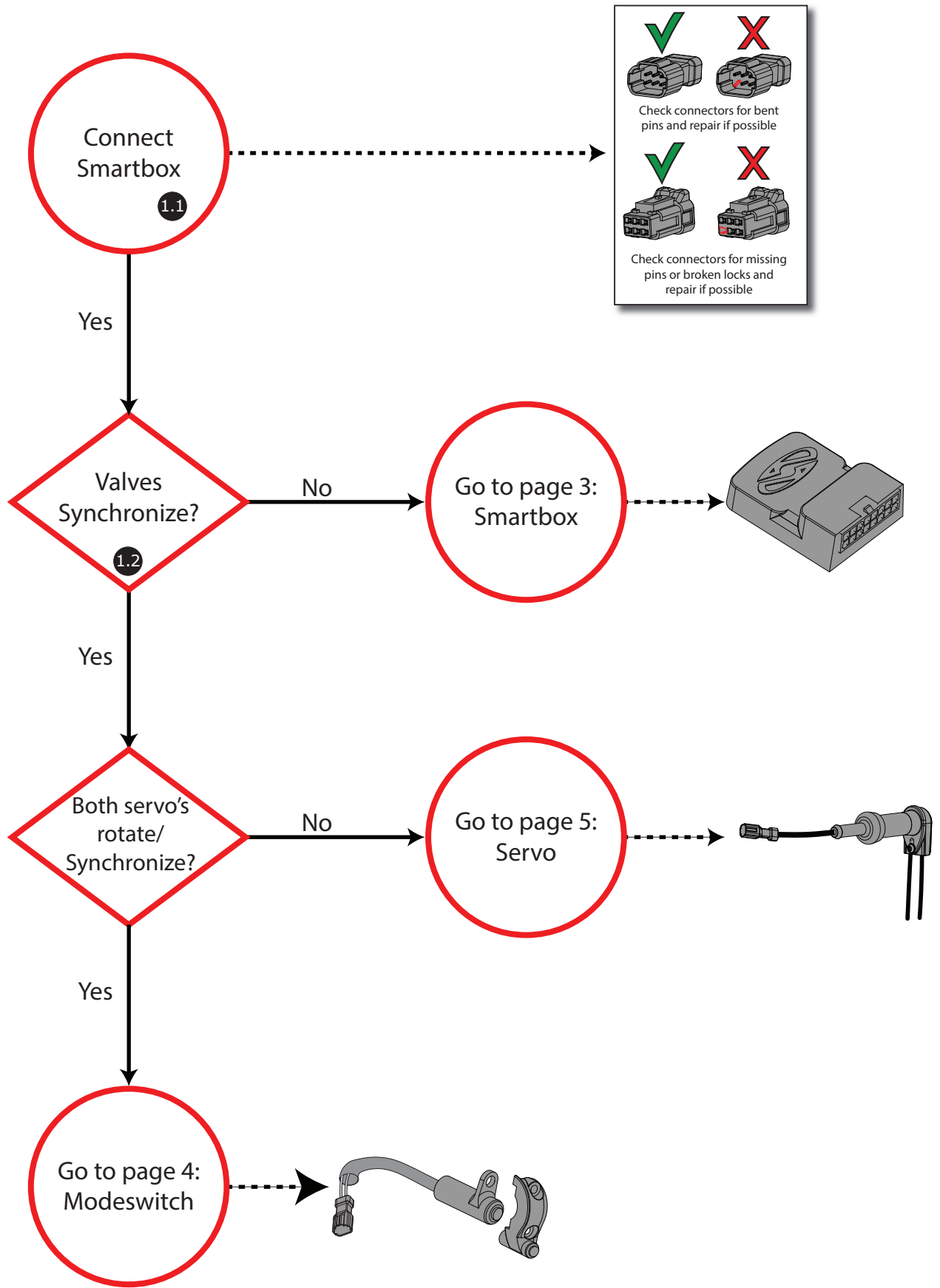


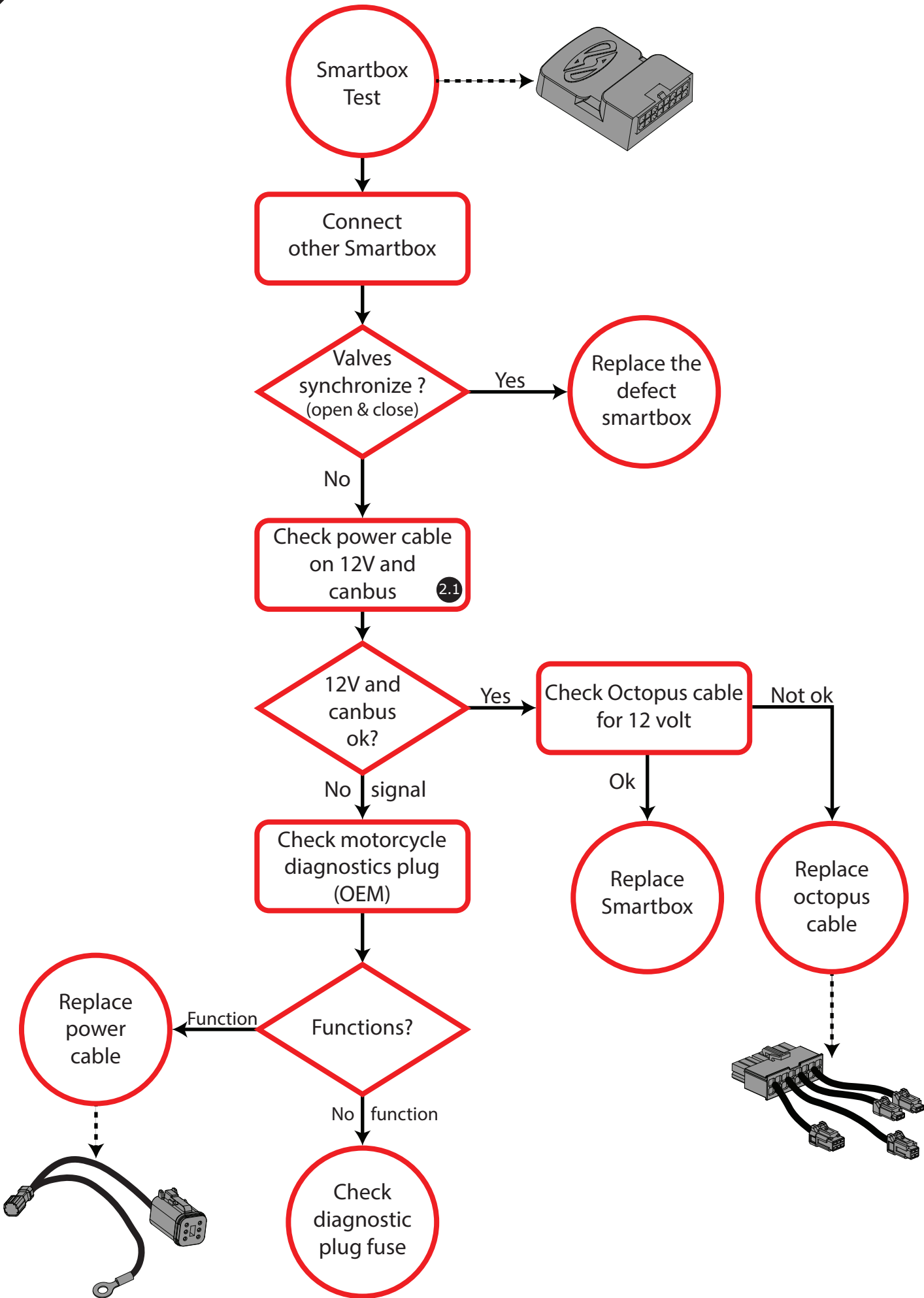
Dr. Jekyll & Mr. Hyde[®]

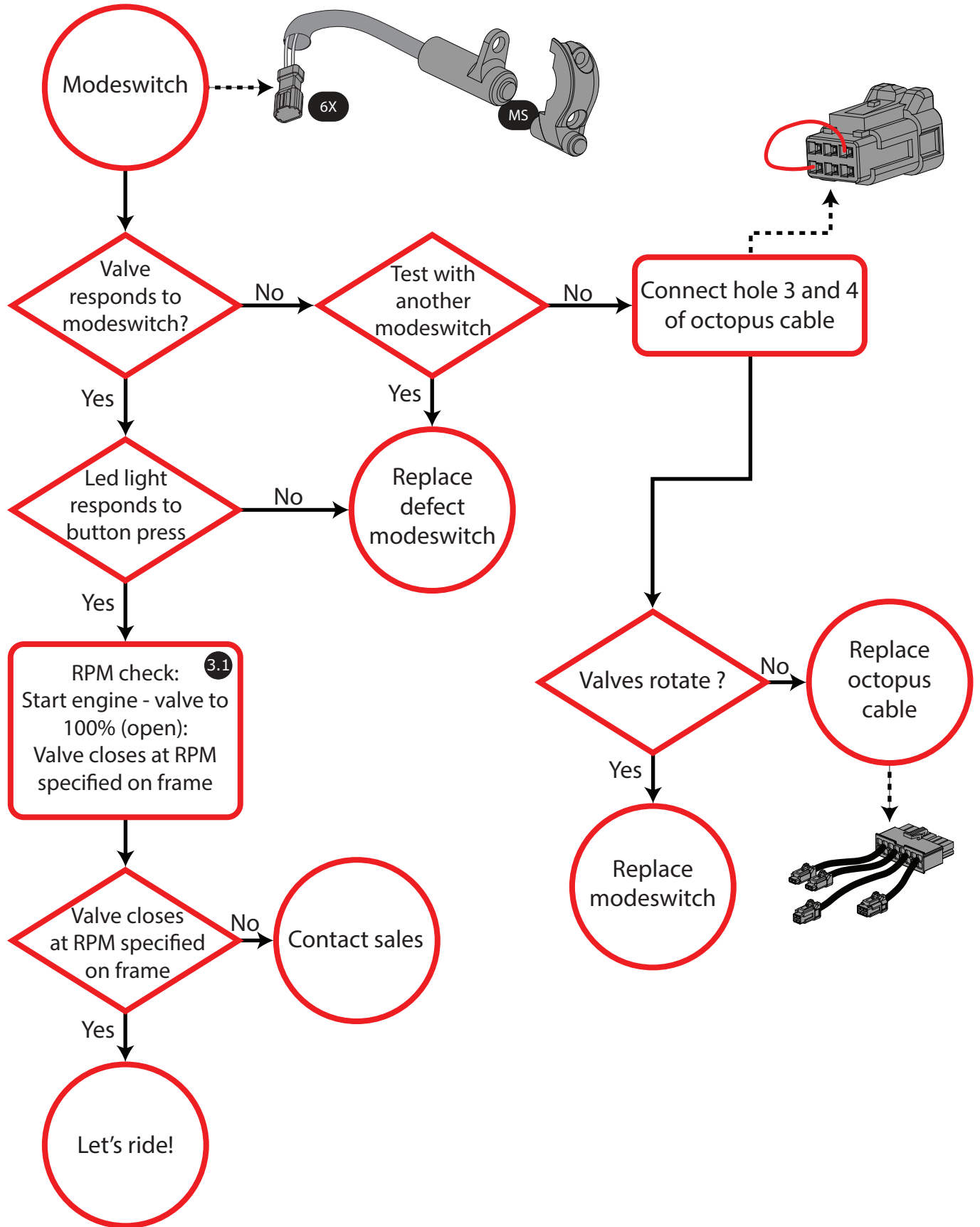
THE EXHAUST

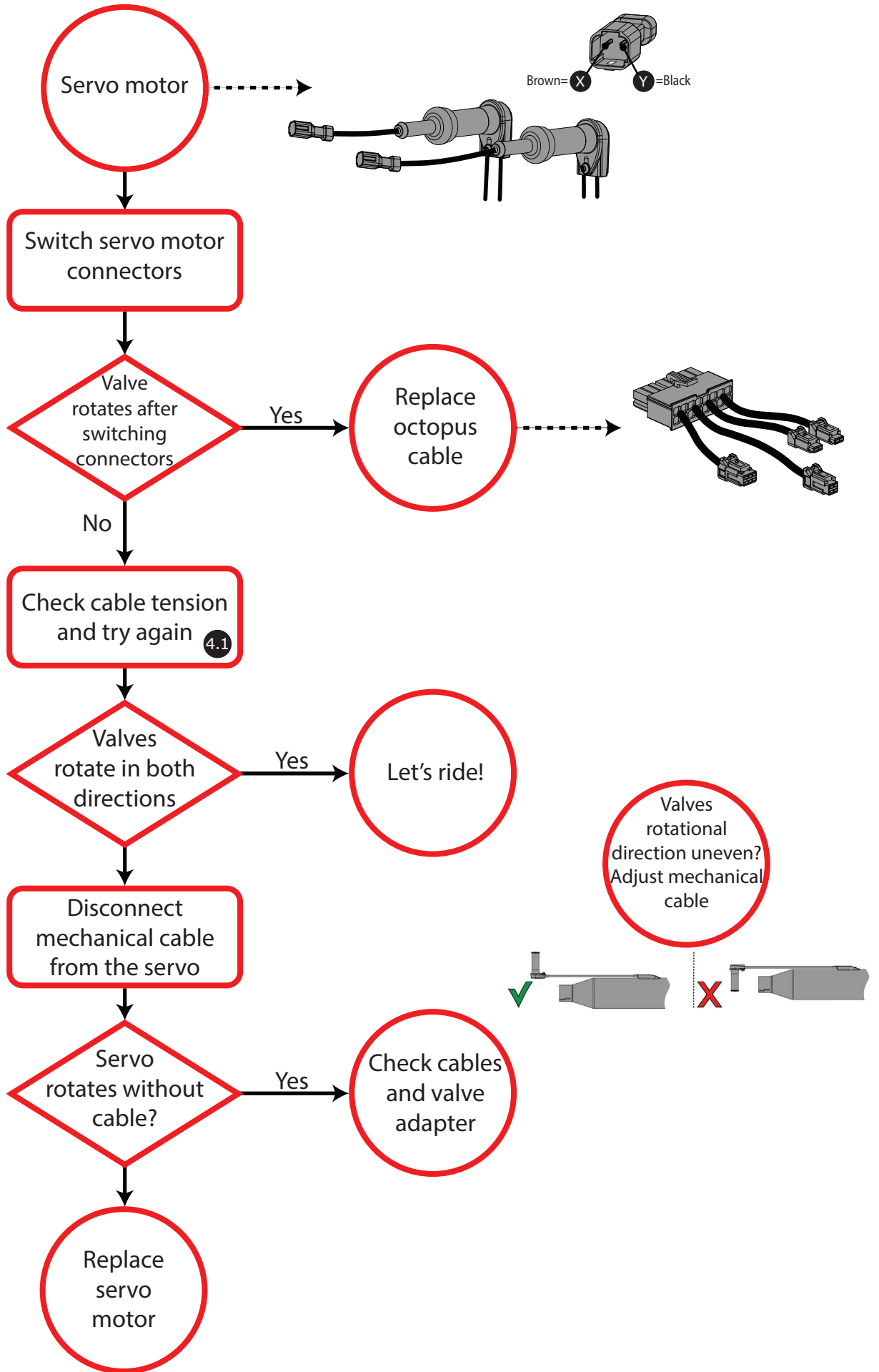
TROUBLESHOOTER: SMARTBOX 2







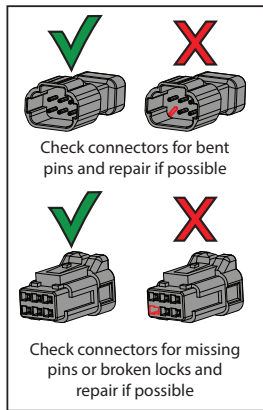




INSTRUCTIONS

- 1. Check Connectors

Check connector for missing pins or broken locks and check if no cables are loose.



- 1.1 What happens when initializing and when does the system initialize?

The initialization is at any time the Smartbox is supplied with power again. This could be when it is plugged in or the motor is put on contact.

- 1.2 What do we mean by initializing motors?

Initializing is determining the time when the valve opens and closes, in order to maintain a legal system. The system checks what the valve range is. To determine the center point.

- 2.1 Check power cable and or canbus

Power voltage: + and - 12V,

CAN bus voltage: CAN-High from 2.5V to 3.5V, CAN-Low from 2.5V to 1.5V at rest are both 2.5V.

- 3.1 RPM specifications

This specific RPM window is mentioned on the sticker on the frame. For this test first start the bike and press the button to open the valve to 100%. Then go to the RPM window and the smartbox should react on this by closing the valve. Sometimes it is hard to keep the bike in the indicated window.

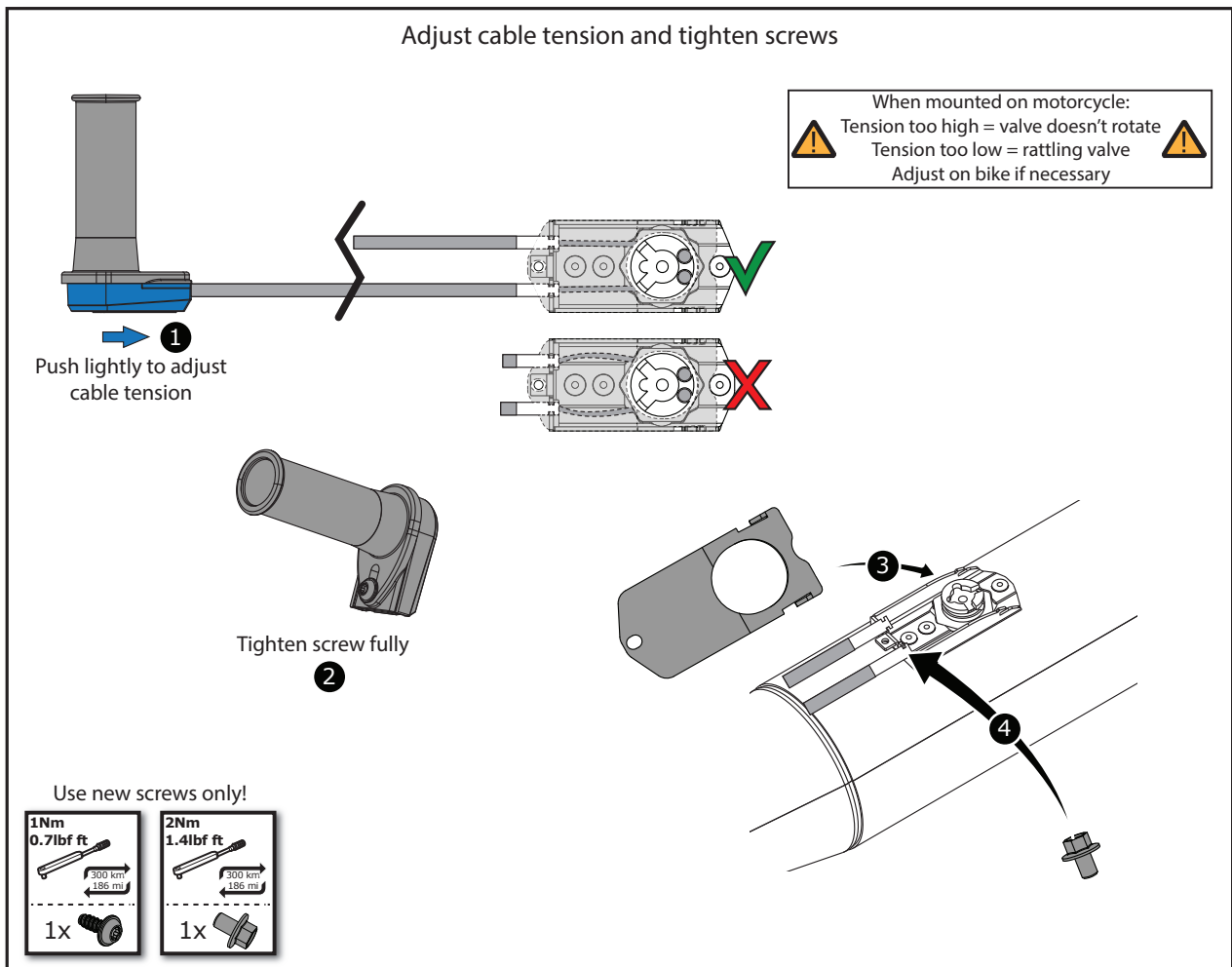
*Touring 117 will react different to this by opening the valve in this window.

• 4.1 Cable Tension

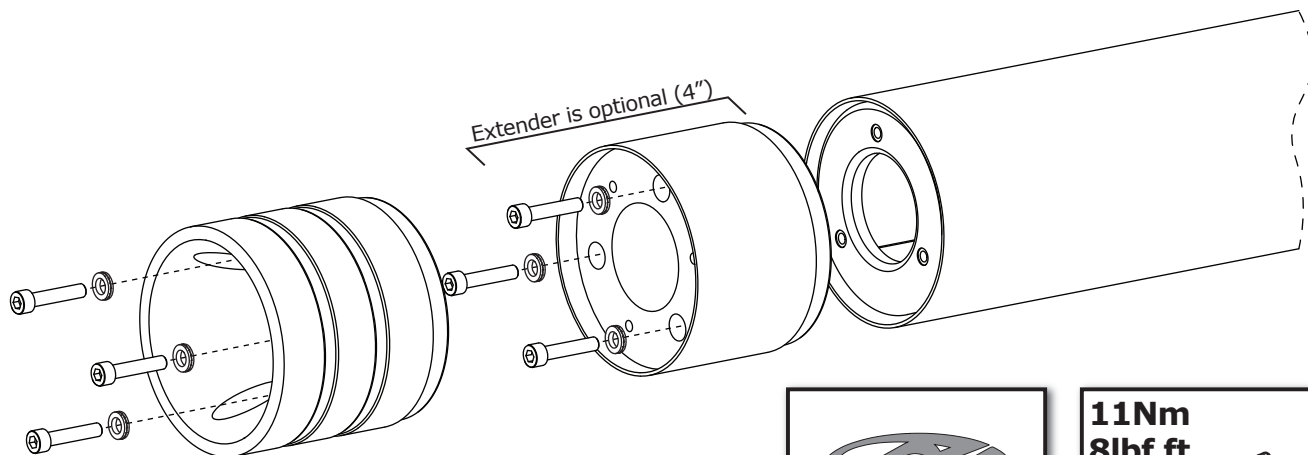
Check the cable tension to see if it is right:

Valve doesn't rotate -> Cable tension too high

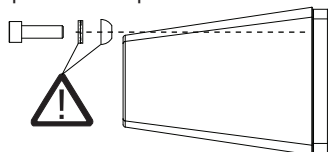
Valve makes a rattling Noise -> cable tension too low



Endcap / Extender Mounting Instructions Nord-Lock




Tapered Endcap




X Don't use!


✓




J&H M6

6x 

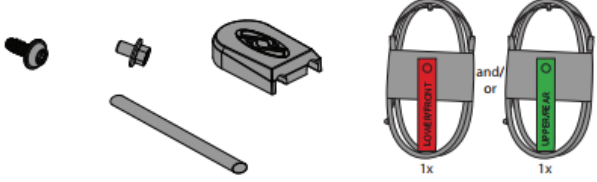
**11Nm
8lbf ft**



300 km
186 mi

6x 

1 Servo Cable Exchange Manual



1x and/or 1x

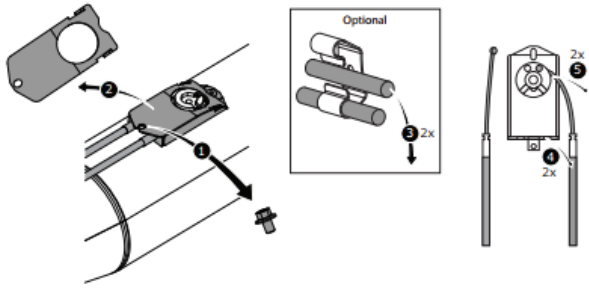
1 Switch to dynamic mode (valve 50% open)

Double press quickly to enter dynamic mode*

*see software manual for more information about switching to 50% mode when a blackbox, control unit or smartbox 1 is installed

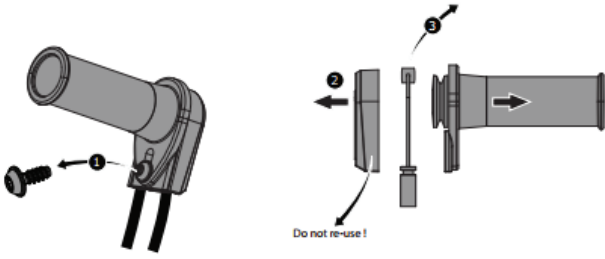
2 Disconnect smartbox 1/2, blackbox or control unit from power supply

2 Remove original cables (exhaust side)



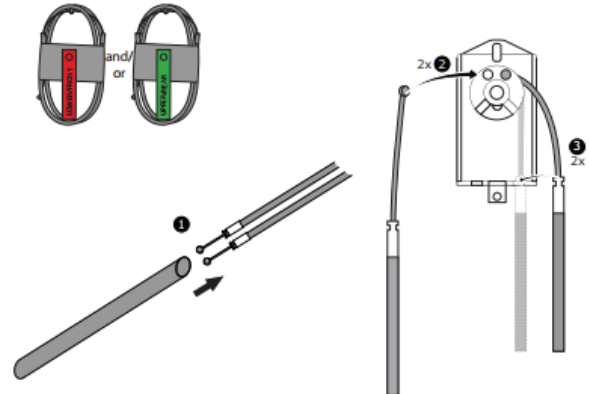
Optional

3 Remove original cables (servo side)

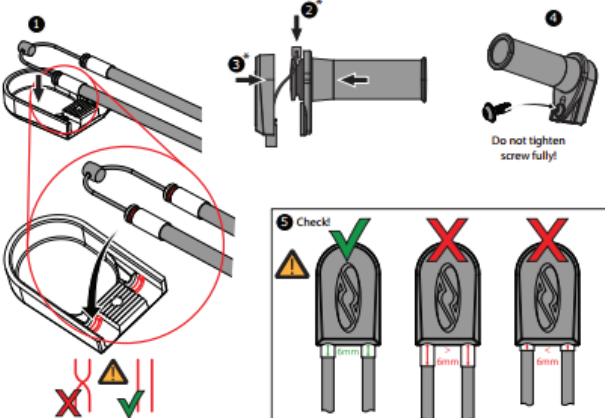


Do not re-use!

4 Slide sleeve over cables, mount new cables to exhaust



5 Mount new cables to servo's and adjust cable tension

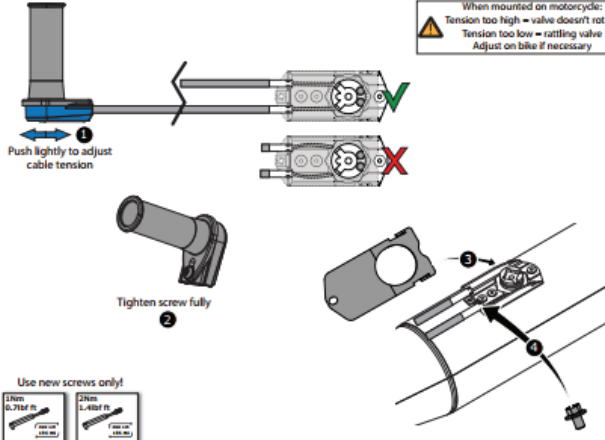


Do not tighten screw fully!

5 Check!

Avoid twisted cables

6 Adjust cable tension and tighten screws



When mounted on motorcycle:
Tension too high = valve doesn't rotate
Tension too low = rattling valve
Adjust on bike if necessary

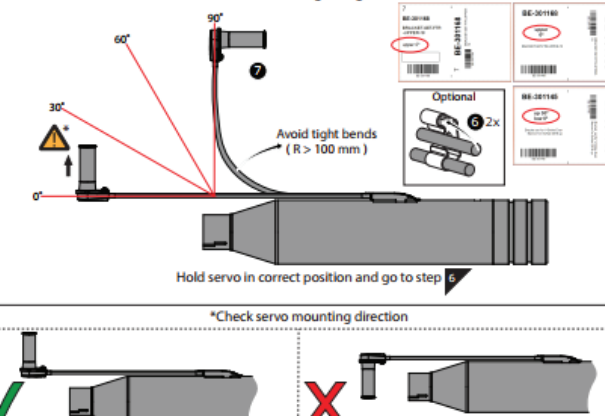
Push lightly to adjust cable tension

Tighten screw fully

Use new screws only!

1x 1.5mm L-40x10
1x 2mm L-40x10

Bend servo according to angle on label



Avoid tight bends (R > 100 mm)

Hold servo in correct position and go to step 6

*Check servo mounting direction

7 Checklist/Troubleshooter

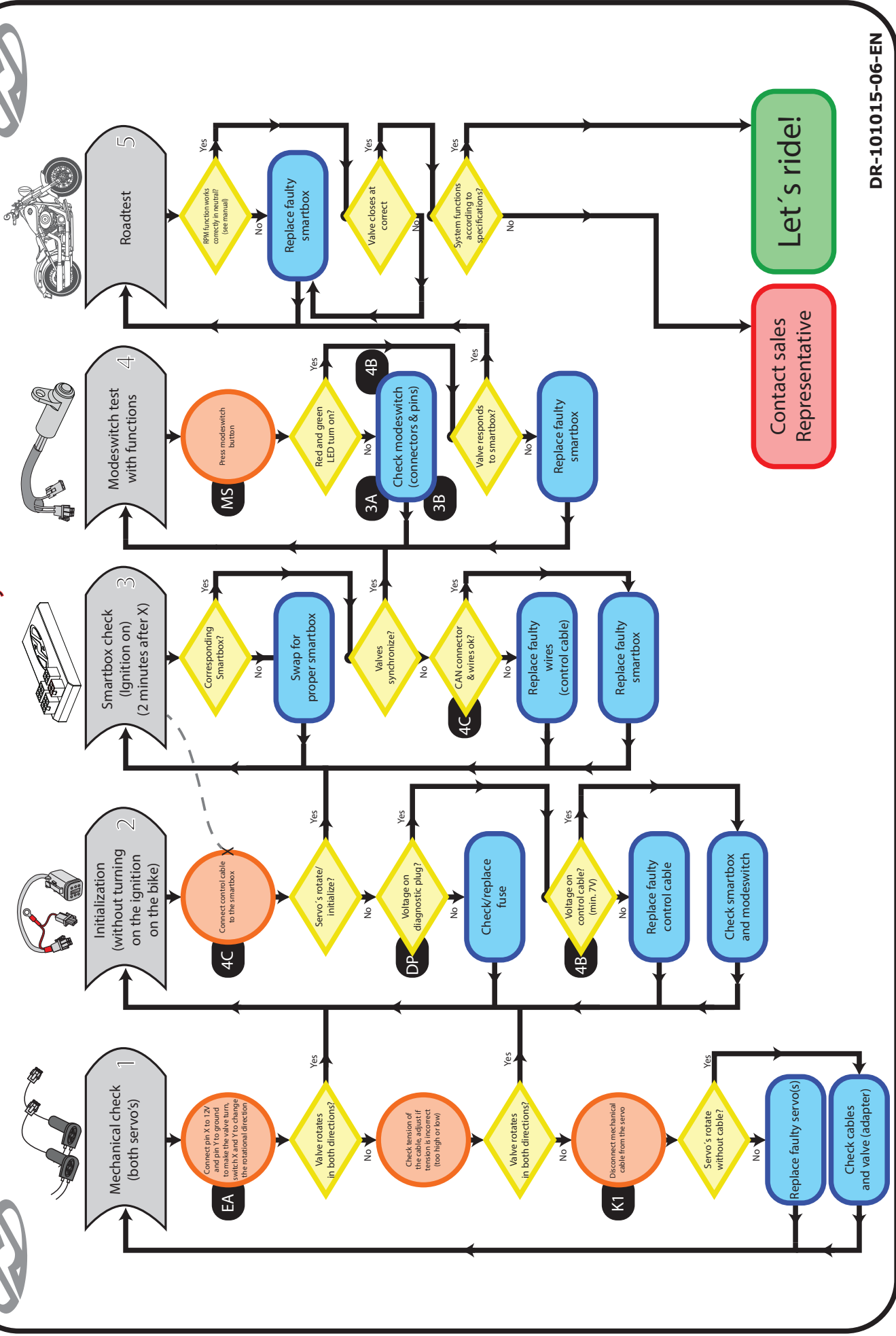
Check:

- If applicable: Cable's of both exhausts have been exchanged?
- Sleeve installed?
- Servo angle according to label?
- Cable tension ok?
- Screws tightened?

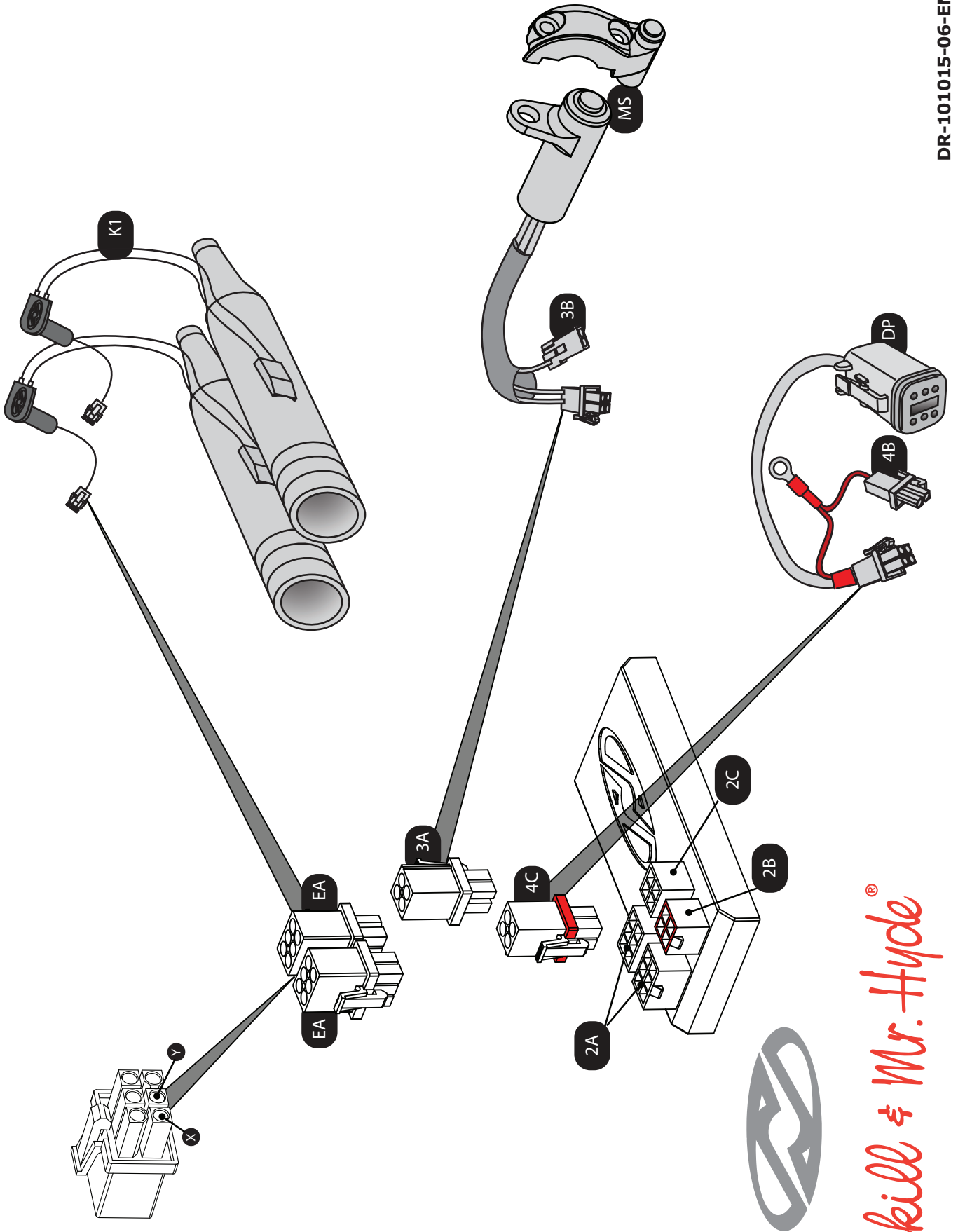
Troubleshooter:

- If applicable: 1 exhaust opens and 1 closes -> twisted cables
- If applicable: 1 exhaust opens and 1 closes -> 1 servo mounted in wrong direction
- Valve doesn't rotate -> Cable tension too high
- Valve makes a rattling noise -> Cable tension too low

Smartbox Double Servo Exhaust System Troubleshooter



DR-101015-06-EN



Dr. Tekill & Mr. Hyde[®]